

This article was downloaded by: [72.79.46.230]

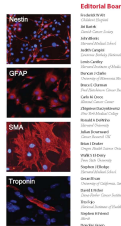
On: 20 August 2015, At: 13:58

Publisher: Taylor & Francis

Informa Ltd Registered in England and Wales Registered Number: 1072954 Registered office: 5 Howick Place, London, SW1P 1WG

CellCycle

Volume 14 • Issue 14 • July 15, 2015



Editorial Board

Editorial Board members listed in the journal cover.

Editor-in-Chief
M. Hagiwara, MD, PhD
Harvard Medical School, Boston, MA, USA

Editorial Board members listed in the journal cover.



Cell Cycle

Publication details, including instructions for authors and subscription information:

<http://www.tandfonline.com/loi/kccy20>

Precision oncology for patients with advanced cancer: the challenges of malignant snowflakes

Razelle Kurzrock^a & Francis J Giles^b

^a Center for Personalized Cancer Therapy; Division of Hematology and Oncology; UC San Diego Moores Cancer Center; San Diego, CA USA

^b Northwestern Medicine Developmental Therapeutics Institute; Robert H Lurie Comprehensive Cancer Center of Northwestern University; Chicago, IL USA

Accepted author version posted online: 01 Jun 2015.



CrossMark

[Click for updates](#)

To cite this article: Razelle Kurzrock & Francis J Giles (2015) Precision oncology for patients with advanced cancer: the challenges of malignant snowflakes, *Cell Cycle*, 14:14, 2219-2221, DOI: [10.1080/15384101.2015.1041695](https://doi.org/10.1080/15384101.2015.1041695)

To link to this article: <http://dx.doi.org/10.1080/15384101.2015.1041695>

PLEASE SCROLL DOWN FOR ARTICLE

Taylor & Francis makes every effort to ensure the accuracy of all the information (the "Content") contained in the publications on our platform. Taylor & Francis, our agents, and our licensors make no representations or warranties whatsoever as to the accuracy, completeness, or suitability for any purpose of the Content. Versions of published Taylor & Francis and Routledge Open articles and Taylor & Francis and Routledge Open Select articles posted to institutional or subject repositories or any other third-party website are without warranty from Taylor & Francis of any kind, either expressed or implied, including, but not limited to, warranties of merchantability, fitness for a particular purpose, or non-infringement. Any opinions and views expressed in this article are the opinions and views of the authors, and are not the views of or endorsed by Taylor & Francis. The accuracy of the Content should not be relied upon and should be independently verified with primary sources of information. Taylor & Francis shall not be liable for any losses, actions, claims, proceedings, demands, costs, expenses, damages, and other liabilities whatsoever or howsoever caused arising directly or indirectly in connection with, in relation to or arising out of the use of the Content.

This article may be used for research, teaching, and private study purposes. Terms & Conditions of access and use can be found at <http://www.tandfonline.com/page/terms-and-conditions>

It is essential that you check the license status of any given Open and Open Select article to confirm conditions of access and use.

Precision oncology for patients with advanced cancer: the challenges of malignant snowflakes

Razelle Kurzrock^{1,*} and Francis J Giles²

¹Center for Personalized Cancer Therapy; Division of Hematology and Oncology; UC San Diego Moores Cancer Center; San Diego, CA USA; ²Northwestern Medicine Developmental Therapeutics Institute; Robert H Lurie Comprehensive Cancer Center of Northwestern University; Chicago, IL USA

Precision oncology implies customizing treatment to the unique molecular and biologic characteristics of each individual and their cancer. Its implementation is being facilitated by remarkable technological advances in genomic sequencing, as well as the increasing availability of targeted and immunotherapeutic drugs. Yet, next generation sequencing may be a disruptive technology in that its results suggest that classic paradigms for clinical research and practice are a poor fit with the complex reality encountered in metastatic malignancies. Indeed, it is evident that advanced tumors have heterogeneous molecular landscapes that mostly differ between patients. Traditional modes of clinical research/practice are drug centered, with a strategy of finding commonalities between patients so that they can be grouped together and treated similarly. However, if each patient with metastatic cancer has a unique molecular portfolio, a new patient-centered, N-of-one approach that utilizes individually tailored treatment is needed.

Precision oncology (personalized cancer therapy) entails tailoring treatment to the unique molecular/biologic makeup of each tumor. The basis for its implementation is decades of preclinical work that identified specific molecular/biologic aberrations that promote tumor growth and/or evasion of host immune-surveillance, and the development of targeted treatments to prosecute these anomalies. Technological tools that enable interrogation of genomic profiles have advanced at a startling pace, with the first human genome sequenced just over a decade ago

(costing approximately 3 billion dollars) and taking years to accomplish, while today full genomic next generation sequencing (NGS) can be completed in days for less than 5 thousand dollars.

Reclassification of Cancer

The reality unveiled by NGS fits poorly with traditional oncology trials and practice. Indeed, NGS represents a disruptive technology whose findings dictate the necessity of new approaches, including a need for the reclassification of cancer. Cancers are currently categorized according to anatomical site of origin (e.g., breast, lung or colon cancer), yet oncologists have long recognized that tumors originating in a particular organ respond differently to the same agents and, furthermore, that drugs may be effective in cancers originating from different organs. NGS provides a possible explanation, since most molecular aberrations do not segregate by organ of origin, and tumors from different organs may have similar mutations.²

Malignant Snowflakes

NGS has revealed a complicated picture—i.e., patients with metastatic cancers have unique genomic landscapes; their tumors may be “malignant snowflakes” in that no 2 are identical.¹ For instance, in 57 patients with metastatic breast cancer, we observed 216 somatic aberrations (131 being distinct) in 70 different genes, (NGS, 182 or 236 gene panel; median = 4 aberrations/patient).¹ As technologies

Keywords: cancer, genomics, precision oncology, targeted therapy

© Razelle Kurzrock and Francis J Giles

*Correspondence to: Razelle Kurzrock; Email: rkurzrock@ucsd.edu

Submitted: 03/12/2015

Revised: 03/28/2015

Accepted: 04/11/2015

<http://dx.doi.org/10.1080/15384101.2015.1041695>

This is an Open Access article distributed under the terms of the Creative Commons Attribution-Non-Commercial License (<http://creativecommons.org/licenses/by-nc/3.0/>), which permits unrestricted non-commercial use, distribution, and reproduction in any medium, provided the original work is properly cited. The moral rights of the named author(s) have been asserted.

improve to full genomic sequencing of tumor and germ-line, additionally enabling assessment of host variations influencing drug metabolism/toxicity, it seems inevitable that tumors will be defined by their unique molecular signatures.

Innovative Approaches to Clinical Research/Treatment

The reality that most tumors are distinct and driven by specific molecular aberrations demands novel approaches. The following have been proposed: (i) use traditional clinical trial paradigms that group patients together, but base therapy on the molecular drivers, rather than just tumor histology; or (ii) replace traditional paradigms, and treat patients with customized, individualized combinations of drugs.³

The first approach has already emerged, with the advent of genomically-driven trials, either within histologies (e.g., BRAF inhibitors for *BRAF*-mutant melanoma) or so-called “bucket” or “basket” trials that are histology-agnostic (a BRAF inhibitor for any *BRAF*-mutant cancer). (In many ways, the latter strategy is analogous to classic organ-specific trials (e.g., a colon cancer trial) that could be viewed as a molecularly-agnostic “bucket” trial for a particular histology).

The strategy of molecularly driven trials has yielded remarkable responses in several malignancies.^{4,5} However, few patients with advanced solid tumors achieve complete remission and almost all relapse, probably because of the presence/emergence of additional aberrations that mostly differ between patients. Computer algorithms that identify convergence pathways for multiple aberrations may enable the continued grouping of individuals with distinct molecular portfolios together for the sake of treatment.⁶ However, even if there is some convergence of genomic paths, additional technologies such as transcriptomics and proteomics, as well as probing host polymorphisms, are likely to reveal yet more complexity/individuality. Distilling these myriad anomalies down to a few signals that can be prosecuted with a limited number of drugs appears unlikely. For instance, the optimal drug (e.g., small

molecule inhibitor versus antibody) may vary with the host proclivity to toxicity as well as the specific part of the pathway rendered abnormal, which in turn may depend on the precise mutation.

The Conundrum of Combination Therapy

Complicating the situation further is the fact that most advanced neoplasms harbor multiple molecular aberrations. The strategy of grouping patients for mono-therapy has been feasible, though complicated. The need for combinations of drugs to optimize response/circumvent resistance is however clear, as few patients with advanced disease achieve long-term survival with mono-therapy. Yet, even tumors that have an aberration in common often differ in the rest of their molecular fingerprint.¹ This fact makes grouping patients for combination therapy a herculean task. Indeed, the very definition of “personalized” treatment is not consistent with canonical trial and practice paradigms, where patients are treated in the same way based on some biologic commonality. Rather, the data indicate that, even if patients have an aberration in common, the rest of their molecular backdrop is distinct,¹⁻³ and hence customized individualized therapy—the N-of-one approach—is required for optimal results.

Individualized Treatment Outside of the Cancer Field

There are several challenges that present themselves when a strategy of individualized combination therapy is broached. The most pronounced are related to concerns about the safety of combinations of anti-cancer drugs, when such combinations have not undergone formal early-phase testing. In this context, it is important to examine the lessons learned from the practice of medicine outside the cancer field.

The typical patient with cancer is already receiving 5 to 10 drugs for their co-morbidities, which frequently

include heart disease, diabetes, depression, etc. The appropriate drugs are routinely prescribed (without phase I safety testing of the combinations) based on patients’ “individual” co-morbidities and well-known algorithms regarding metabolism/organ function that dictate safety. Why is cancer an exception? The historic prohibition against combining anti-cancer drugs without formal phase I testing is likely a legacy of the cytotoxic era. Cytotoxics have considerable side effects resulting in the legitimate concern that *de novo* combinations would result in dangerous toxicities. Targeted agents, however, often have fewer side effects. Furthermore, there is a wealth of information that has been gleaned from years of practice in non-cancer fields on the routine, safe use of combinations tailored to an individual’s condition, and this information could be applied to anti-cancer drugs. Algorithms/simulations that incorporate multiple factors (e.g., toxicity, metabolism, targets, drug class, need for initial dose reductions) could be deployed to permit *de novo* combinations of cancer drugs similar to what is routinely done for patients with multiple non-cancer illnesses

In summary, the following major points emerge from discoveries in clinical cancer genomics.

1. Cancer should be reclassified based on its molecular/biologic characteristics, rather than just organ of origin.
2. Metastatic cancers appear to be “malignant snowflakes,” each having unique genomic portfolios.
3. If tumors are defined by their molecular makeup, advanced molecular tests should be considered a standard diagnostic tool for patients with cancer.
4. Mono-therapy is unlikely to cure patients with advanced/complex malignancies. Customized combination therapy will be required.
5. Customized combinations of drugs are routinely prescribed outside the cancer field, and tailored to the patient’s co-morbidities. Algorithms based in part on lessons learned from years of such practice should be developed in order to predict safe

starting doses for *de novo* anticancer combinations.

6. The definition of “personalized” treatment is inconsistent with canonical trial/practice paradigms, where patients are grouped together based on a biologic commonality. A patient-centered, N-of-one approach is needed to optimize therapy.
7. Profound changes in many aspects of current developmental therapeutics practice in oncology will be required to take maximal advantage of the knowledge being generated by molecular science. These changes will require new consensus among the patient, scientific, medical, industrial, and regulatory stakeholders.

Disclosure of Potential Conflicts of Interest

Dr. Kurzrock receives consultant fees from Sequenom and has an ownership interest in RScueRx Inc.

Funding

Funded in part by the Joan and Irwin Jacobs Fund and MyAnswerToCancer philanthropic fund. Dr. Kurzrock has research funding from Genentech, Pfizer, Merck Serono, and Foundation Medicine.

References

1. Wheler JJ, Parker BA, Lee JJ, Atkins JT, Janku F, Tsimberidou AM, Zinner R, Subbiah V, Fu S, Schwab R, et al. Unique molecular signatures as a hallmark of patients with metastatic breast cancer: implications for

current treatment paradigms. *Oncotarget* 2014; 5 (9):2349-54; PMID:24811890

2. Kandoth C, McLellan MD, Vandin F, Ye K, Niu B, Lu C, Xie M, Zhang Q, McMichael JF, Wyczalkowski MA, et al. Mutational landscape and significance across 12 major cancer types. *Nature* 2013; 502 (7471):333-9; PMID:24132290; <http://dx.doi.org/10.1038/nature12634>
3. Wheler JJ, Lee JJ, Kurzrock R. Unique Molecular Landscapes in Cancer: Implications for Individualized, Curated Drug Combinations. *Cancer Res* 2014; 74 (24):7181-4; [Epub ahead of print]; PMID:25326492; <http://dx.doi.org/10.1158/0008-5472.CAN-14-2329>
4. Shaw AT, Kim DW, Mehra R, Tan DS, Felip E, Chow LQ, Camidge DR, Vansteenkiste J, Sharma S, De Pas T, et al. Ceritinib in *ALK*-rearranged non-small-cell lung cancer. *N Engl J Med* 2014; 370:1189-97; PMID:24670165; <http://dx.doi.org/10.1056/NEJMoa1311107>
5. Charles L, Sawyers MD. Chronic myeloid leukemia. *N Engl J Med* 1999; 340:1330-40; PMID:10219069; <http://dx.doi.org/10.1056/NEJM199904293401706>
6. Hanahan D, Weinberg RA. Hallmarks of cancer: the next generation. *Cell* 2011; 144:646-74; PMID:21376230; <http://dx.doi.org/10.1016/j.cell.2011.02.013>